

# B&P

ascoltare,  
ideare,  
produrre.

**Personal  
and Care**

---

Set manicure, set da bagno per bambini e set di pennelli per il trucco. Specchietti tascabili, spazzole per capelli, scaldamani, spazzolini da denti, borse da viaggio e cravatte. Supporto per smartphone , porta carte di credito, portachiavi e molto altro...

Manicure set, baby bath set and makeup brush set. Pocket mirrors, hair brushes, hand warmers, toothbrushes, travel bags and ties. Smartphone holder , credit card holder, keychain and more...

# Personal and Care





.07 .04 .17 .02 .06 .23



.08



.21 .01



.08



43190  
**Jaqueline**

Beauty case con chiusura ermetica in PVC traslucido. | Beauty bag in translucent PVC with hermetic closure.

Pvc traslucido | Translucent pvc

17 x 12,5 x 4,5 cm



43110  
**Shadu**

Pochette in PVC trasparente, con chiusura zip colorata. | Bag made of transparent PVC, with coloured zipper closure.

Pvc | pvc

18 x 4 x 18 cm



.32

.16

.31



43255  
**Ormelle**

Astuccio dal design lucido, con cerniera e tirazip coordinati. | Pencil case with a glossy design, with matching zip and zip puller.

Similpelle | Leatherette

12 x 8,5 cm

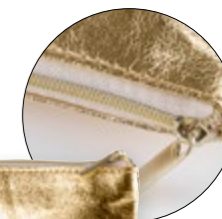


43250  
**Bassano**

Pochette dal design piatto, in similpelle color oro | Gold Imitation leather flat design clutch bag

Similpelle | Leatherette

23 x 18 cm



.31



.17 .06



.21



.21



.21



43143  
**Benagil**

Pochette in PVC trasparente con chiusura zip. | Translucent pvc Toiletry bag with zip fastener.

Pvc | pvc

19 x 4,5 x 14 cm



43162  
**Lawers**

Pochette in Eva trasparente con chiusura zip con finitura metallizzata. Senza PVC. | Toiletry bag made of transparent Eva material with zipper closure with metallic finish.

Eva | Eva

19 x 5 x 16 cm



43124  
**Genga**

Pochette con chiusura zip. Senza PVC. | Eva Toiletry bag with zip fastener. Pvc free.

Eva | Eva

18,5 x 4,7 x 14 cm



.31

.32



43203  
**Trigo**

Pochette con finitura metallizzata opaca, chiusura con zip colorata coordinata e tirazip nello stesso materiale. | Toiletry bag made of PU, in a matt metallic finishing, matching colour zipper closure and matching puller.

Similpelle | Leatherette

21 x 15 cm



.01

.31

.16



43135  
**Gessate**

Pochette unisex con chiusura con zip e tirazip con fascetta in PU per una migliore presa. | Unisex toiletry bag with zipper closure with strap zipper puller for easy opening.

Pvc | pvc

18,5 x 11,5 x 2,5 cm



.13



43169  
**Macchia**



Beauty bag in cotone, con ogni lato di un diverso colore. Con patella. Tirazip in corda. | Toilet bag made of cotton, with each face in a different colour and flap, rope puller.

Cotone | Cotton

Aperto: 19,5 x 21 cm

180 gr/m<sup>2</sup> 280 gr/m<sup>2</sup>  
1st side 2nd side



.13



43251  
**Barbarano**



Pochette in morbido poliestere particolarmente adatto alla sublimazione. Tirazip coordinato. | Clutch bag in soft polyester particularly suitable for sublimation. Co-ordinated zip puller.

Poliestere | Polyester

Aperto: 22 x 14 x 6,5 cm



SPECIAL FOR SUBLIMATION



.05 .13 .04



.13



.08



.01



43229  
**Cardamomo**



Pochette con lungo manico in cotone intrecciato. | Cotton toilet bag with a long braided cotton handle.

Cotone - 140 gr/m<sup>2</sup> | Cotton - 140 gr/m<sup>2</sup>

Aperto: 26 x 26 x 5 cm / Chiuso: 26 x 18 x 5 cm

140 gr/m<sup>2</sup>



43231  
**Foshan**

Pochette color natural con chiusura zip colorata. Laccettino in simpelle colorata coordinata, per un più facile trasporto. | Toiletry bag natural colored with colored zip closure. Matching colored leatherette strap for easier transport.

Cotone - 300gr/m<sup>2</sup> | Cotton - 300gr/m<sup>2</sup>

Aperto: 21 x 15,5 x 3 cm

300 gr/m<sup>2</sup>



43206  
**Segugio**

Pochette con tirazip coordinato in tessuto. | Toiletry bag made of black cotton with matching puller with strap for.

Cotone - 280 gr/m<sup>2</sup> | Cotton - 280 gr/m<sup>2</sup>

Aperto: 21 x 15 cm

280 gr/m<sup>2</sup>

SPECIAL FOR SUBLIMATION



.32



43935  
**Loreo**



Pochette. Aspetto cotone, idoneo per la stampa sublimatica | Beauty case. Perfect for sublimation printing.

Poliestere | Polyester

Aperto: 21 x 14 cm

SPECIAL FOR SUBLIMATION



.13



43843  
**Uscio**



Pochette con chiusura zip. Particolarmente adatta alla sublimazione. | Toiletry bag with zipper closure. Especially designed for sublimation printing.

Poliestere | Polyester

Aperto: 20 x 15 cm

450 gr/m<sup>2</sup>



43240

**Bartolomea**

NEW

Pochette molto capiente con una finitura vellutata e cuciture fini decorative | Large clutch bag with a velvety finish and decorative fine stitching

Esterno: Cotone, interno: Poliestere | Outer: Cotton, Inner: Polyester

18 x 9 x 6,5 cm

325 gr/m<sup>2</sup>



43239

**Bardolino**

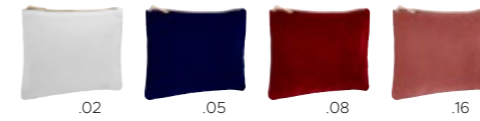
NEW

Pochette dal design piatto con una finitura vellutata e cuciture fini decorative. | Flat design clutch bag with a velvety finish and decorative fine stitching.

Esterno: Cotone, interno: Poliestere | Outer: Cotton, Inner: Polyester

24 x 15 cm

325 gr/m<sup>2</sup>



43205

**Tarso**

Pochette con fodera interna, chiusura con zip e tirazip in color oro. | Toiletry bag made of velvet with inner lining, zipper closure and metal puller in golden colour.

Velluto | Velvet

22,5 x 17,5 cm



43207

**Rachele**

Pochette a forma di sacca, con chiusura con coulisse e finitura in satin. | Toiletry bag made of velvet in a small bag shape with a string closing and satin finishing.

Velluto | Velvet

Ø 13 x 25 cm



43249

**Follina**

NEW

Pochette in cotone con una finitura liscia vellutata. | Cotton clutch bag with a smooth velvety finish.

Cotone | Cotton

21 x 14 x 6 cm

325 gr/m<sup>2</sup>



CURLY TEXTURED FINISH

.13



43241  
**Bagnolo**

NEW

Pochette realizzata in cotone e poliestere, con finitura morbida effetto spugna. | Clutch bag made of cotton and polyester, with a soft terry effect finish.

Esterno: 60% cotone, 40% poliestere, Interno: cotone | Outer: 60% Cotton, 40% Polyester, Inner: Cotton

24 x 18 x 5 cm

375 gr/m<sup>2</sup>



.16

.01

.18



43927  
**Viggiano**

Pochette con chiusura zip. Tirazip con pompom con frange | Beauty case with zipper

Cotone | Cotton

20,5 x 14,5 cm

340 gr/m<sup>2</sup>



.02



43260  
**Tarzo**

NEW

Pochette con tirazip con dettaglio dorato. | Clutch bag with zip puller with golden detail.

Cotone waffle - 240 gr/m<sup>2</sup> | Waffle cotton - 240 gr/m<sup>2</sup>

20 x 8 x 14 cm



CURLY TEXTURED FINISH



.13



43238  
**Baone**

NEW

Pochette realizzata in cotone e poliestere con finitura morbida effetto spugna. | Clutch bag made of cotton and polyester with a soft terry effect finish.

Esterno: 60% cotone, 40% poliestere, Interno: cotone | Outer: 60% Cotton, 40% Polyester, Inner: Cotton

20 x 14 x 4,5 cm

375 gr/m<sup>2</sup>



.02



43259  
**Scorzè**

NEW

Pochette con tirazip con dettaglio dorato. | Clutch bag with zip puller with golden detail.

Cotone waffle - 240 gr/m<sup>2</sup> | Waffle cotton - 240 gr/m<sup>2</sup>

21 x 15 cm



.13



43242  
**Estense**



Pochette con dettagli dorati nella trama del tessuto. Tira zip coordinato | Clutch bag with golden details in the fabric texture. Matching zip puller

85% Cotone, 15% Lurex | 85% Cotton, 15% Lurex

22 x 14,5 x 6 cm

200 gr/m<sup>2</sup>



.31

.01



43224  
**Antimonio**

Pochette con finiture in lurex che donano particolare brillantezza. Tirazip in tessuto con frange | Clutch bag with lurex finishes that give particular brilliance.

Juta | Jute

21 x 15 cm



.18

.23

.13



.08



43147  
**sinnlig**

Pochette con cerniera colorata | Toiletry bag with coloured zip

Cotone - 220 gr/m<sup>2</sup> | Cotton - 220 gr/m<sup>2</sup>

23 x 15,5 x 6 cm

220 gr/m<sup>2</sup>



.07

.19

.08



.23



43990  
**Belogorka**

Pochette con chiusura zip. Con nastro colorato in poliestere. | Kraft paper pouch with zipper closure. Colourful polyester handle

Carta kraft | Kraft paper

23 x 14 x 7 cm



.23

.08

.19



.07



43160  
**Anterselva**



Pochette. Chiusura con zip e profili colorati a contrasto. | Purse. Zip closure and coloured edging

Cotone | Cotton

21,5 x 13 cm

220 gr/m<sup>2</sup>



.32

.31



43202  
**Wally**



Pochette, con inserto con finitura metallizzata sui bordi e sul tirazip. | Toiletry bag made of canvas cotton with metallic borders and matching puller.

Cotone - 230 gr/m<sup>2</sup> | Cotton - 230 gr/m<sup>2</sup>

20,5 x 13 cm

230 gr/m<sup>2</sup>



.13

.01

.23

.04



.08



43194  
**Koku**



Beauty case bicolore multuso con cerniera con tirazip in tinta. | Multipurpose bag with bicolor finish. Zipper with matching zipper puller.

Cotone | Cotton

22,5 x 5,5 x 17 cm

280 gr/m<sup>2</sup>



.05

.06

.04

.07

.23



.08



43917  
**Utrusta**



Pochette con chiusura zip coordinata, con tirazip cromato. | Beauty bag bicolor design, matching colour zipper, with chromed puller.

100% Cotone - 220gr/m<sup>2</sup> | 100% Cotton - 220gr/m<sup>2</sup>

23 x 8 x 18 cm

220 gr/m<sup>2</sup>



43184  
**Bongo**

Pochette in juta laminata e cotone naturale. Con chiusura a cerniera e tirazip in juta abbinato. | Beauty bag in combination of laminated jute and natural cotton. With zip closure and jute puller

Juta Laminato, cotone | Laminated jute, cotton

20 x 15 x 6 cm



43226  
**Californio**

Pochette con chiusura zip con cerniera in juta abbinata. | Beauty bag in cotton and laminated jute.

Cotone, juta laminata | Cotton, laminated jute

21 x 11 x 6 cm



43233  
**Shenyang**

Pochette unisex. Ampio scomparto principale con chiusura zip. Pratico laccettino in similpelle, per un più facile trasporto. | Unisex toiletry bag. Large main compartment with zip closure. Practical leatherette strap for easier transport.

Juta laminata, cotone canvas | Laminated jute, canvas cotton

21 x 11 x 6 cm



43232  
**Chengdu**

Pochette con chiusura zip colorata coordinata. Tirazip con laccetto lungo con frange decorative. | Toiletry bag with coordinated colored zip closure. Zipper puller with long lanyard with decorative fringes.

Juta laminata | Laminated jute

27 x 16,5 x 7,5 cm



43187  
**Boris**

Beauty case in cotone ecologico e juta. Fondo e manico in juta. Cerniera dello stesso colore della borsa. | Toilet bag made of 180 gsm cotton and jute. Lower part and puller in jute.

Cotone, Juta | Cotton, jute

21,5 x 16 x 5 cm

180 gr/m<sup>2</sup>



43186  
**Bonnie**

Beauty case in juta con zip in tinta e tirazip in juta. | Toilet bag made of jute, with matching zip and jute puller.

Juta Laminato | Laminated jute

22 x 14 x 6,5 cm



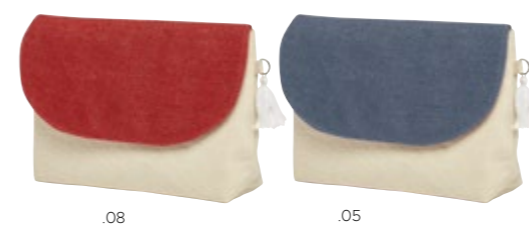
43991  
**Bellosguardo**

Pochette con chiusura con coulisse con inserti in legno. | Toiletry bag made cotton with natural colour finishing with strings closing with wood details.

Cotone - 230 gr/m<sup>2</sup> | Cotton - 230 gr/m<sup>2</sup>

Ø 15 x 25 cm

230 gr/m<sup>2</sup>



43166  
**Astura**

Pochette. Chiusura con bottone magnetico. | Purse. Magnetic closure and lateral cotton fringe

Juta, Cotone | Jute, Cotton

28 x 17 cm







43227  
**Cappero**



Pochette con parte bassa in juta e tirazip in cordino di cotone. | Bag with jute bottom

Cotone Fairtrade - 220gr/m2, Jute - 350 gr/m2 | Fairtrade Cotton - 220gr/m2, Jute - 350gr/m2

20 x 28 cm

220 gr/m<sup>2</sup>



43214  
**Rosa**



Beauty in cotone equo e solidale | Toilet bag made with fair trade and cotton

Cotone Fairtrade - 280gr | Fairtrade cotton - 280gr

16 x 21 x 5,5 cm

280 gr/m<sup>2</sup>



43213  
**Pomodoro**



Beauty fabbricato in cotone Fairtrade. Tirazip coordinato. | Toilet Bag made in made of Fairtrade cotton. Matching zipper puller.

Cotone Fairtrade - 320 gr/m2 | Fairtrade cotton - 320 gr/m2

21 x 16 cm

320 gr/m<sup>2</sup>



43211  
**Piombaggine**



Beauty fabbricato in Europa può essere fatto con 3 tipi di cotone: OEKO TEX, riciclato o Fairtrade. | Toilet Bag made in Europe can be made from 3 types of cotton: OEKO TEX, recycled or Fairtrade

Cotone OEKO-TEX - 280 gr/m2 | OEKO-TEX cotton - 280 gr/m2

21 x 16 cm

280 gr/m<sup>2</sup>

# FAIR TRADE TOILETRY BAGS

With matching zipper closure.





100% HEMP FABRIC



43262  
**Roveredo**



Trousse in cotone Fairtrade 100% da 180gr/m2. | Toiletry bag in 100% Fairtrade cotton (180 gsm)

100% Cotone Fairtrade - 180 g/m2 | 100% Fairtrade Cotton - 180 gr/m2

21 x 13 x 8 cm

180 gr/m<sup>2</sup>



43841  
**Mianwali**



Pochette con chiusura zip coordinata e tirazip in cotone. | Canvas cotton Toiletry bag of organic in natural colour, with matching zipper closure and zipper puller with strap.

Cotone - 280 gr/m2 | Cotton - 280 gr/m2

21 x 16 cm

280 gr/m<sup>2</sup>



43228  
**Carbonio**



Pochette con cerniera nera a contrasto e tirazip con pendente con frange | Clutch bag with contrasting black zipper and fringed pendant puller

Canapa | Hemp

26 x 22 cm

200 gr/m<sup>2</sup>



100% HEMP FABRIC



43254  
**Villaverla**



Pochette con scomparto principale con cerniera e tirazip coordinato. | Clutch bag with zipped main compartment and matching zip puller.

Cotone Fairtrade - 180 g/m2 | Fairtrade Cotton - 180 gr/m2

23 x 17 cm

180 gr/m<sup>2</sup>



43247  
**Belfiore**



Pochette realizzata in 100% cotone Fairtrade | Clutch bag made of 100% Fairtrade cotton

Cotone Fairtrade | Fairtrade cotton

16 x 21 x 5,5 cm

280 gr/m<sup>2</sup>



43253  
**Martino**



Pochette con scomparto principale con cerniera, tasca frontale con cerniera, tirazip coordinati. | Clutch bag with zipped main compartment, front zipped pocket, matching zip pullers.

Canapa - 200 gr/m2 | Hemp - 200 gr/m2

21 x 13 cm





.23 .04 .08 .01



.09



.08 .19 .05



.13 .04 .01 .05 .08



.13



CHOOSE YOUR PANTONE COLOR



43197  
**Bletilla**



Beauty case in cotone biologico con tirazip coordinato | Toilet bag with matching puller.

Cotone Organico | Organic Cotton

21 x 16 cm

180 gr/m<sup>2</sup>



43210  
**Olmo**



Beauty di cotone organico, tirazip coordinato. Può essere realizzato in colore pantone a partire da 650pz. | Toilet bag made of organic cotton, matching zipper puller. From 650pcs can be produced in pantone color.

Cotone Organico - 280gr/m<sup>2</sup> | Organic Cotton - 280gr/m<sup>2</sup>

21 x 16 cm

280 gr/m<sup>2</sup>



43219  
**Astilbe**



Beauty in cotone riciclato. | Toilet bag made of recycled cotton.

Cotone riciclato | Recycled cotton

20 x 14 x 6 cm

140 gr/m<sup>2</sup>



43198  
**Magnolia**



Beauty case multiuso con cerniera e tiretto abbinati. | Multipurpose toilet bag with matching zip and puller.

Cotone riciclato | Recycled cotton

21 x 3 x 12 cm

180 gr/m<sup>2</sup>



.13



.13



.13



.13



43218  
**Aronia**



Beauty in cotone organico, con base rinforzata. Tirazip in corda. | Organic cotton toilet bag and reinforced bottom part. Rope zipper puller

100% Cotone Organico | 100% Organic Cotton

26 x 22 x 4 cm

310 gr/m<sup>2</sup>



43217  
**Aquilegia**



Beauty in cotone organico. Tirazip coordinato. | Toilet bag made with organic cotton. Matching zipper puller.

100% Cotone Organico | 100% Organic Cotton

20 x 14 x 6 cm

220 gr/m<sup>2</sup>



43171  
**Ombra**



Beauty bag in cotone riciclato con tirazip in legno. | Toilet bag made of recycled cotton, with wooden puller.

Cotone riciclato - 220 gr/m<sup>2</sup> | Recycled cotton - 220 gr/m<sup>2</sup>

20 x 12,5 cm

220 gr/m<sup>2</sup>



43212  
**Pitosforo**



Beauty fabbricato in Europa realizzato in cotone riciclato. Tirazip coordinato. | Toilet Bag made in made of recycled cotton. Matching zipper puller.

Cotone riciclato - 280 gr/m<sup>2</sup> | Recycled cotton - 280 gr/m<sup>2</sup>

21 x 16 cm

280 gr/m<sup>2</sup>

# RPET PURSES AND BEAUTY BAGS

Toilet bags with main compartment and front pocket with matching color zip.



.01



43165  
**Arzino**

Pochette in RPET con chiusura zip e tirazip in metallo color oro. | Toiletry bag made of RPET with metallic zipper with gold finish.

RPET | RPET  
19 x 13 x 4,5 cm



.01



43164  
**Arnata**

Pochette con chiusura zip colorata coordinata | Multipurpose bag with zip closure

RPET 600D | RPET 600D  
23 x 15 cm



.02

.03



43215  
**Bacche**

Beauty in Rpet, la versione bianca è ideale per la stampa in sublimazione. | Toilet bag made with RPET, white version suitable for sublimation printing.

RPET 300D | RPET 300D  
28 x 15 x 8 cm



.03



43216  
**Amsonia**

Beauty in feltro con tirazip in similpelle | Toilet bag, with synthetic leather handle.

Poliestere RPET 3mm | Polyester RPET 3mm  
21,5 x 15 x 2,5



.08



43221  
**Geranio**

Pochette con scomparto principale e tasca frontale con zip e tirazip colorati coordinati e piccolo manico coordinato. Etichetta esterna con logo RPET. | Toilet bag with main compartment and front pocket with matching color zip and zipper puller and matching carry strap. Outer RPET logo label.

Poliestere 210D | 210D polyester  
21 x 8 x 13 cm





.01 .18



.19



43035  
**Rufus**

Pochette con scomparto principale con zip. Inserto semitrasparente | Beauty bag with main compartment with zipper closure. Translucent detail.

Microfibra | Microfiber

21 x 13 x 8,5 cm



.13



43092  
**Ogier**

Pochette con chiusura zip colorata coordinata. | Toiletry bag with zipper closure in matching colour.

Poliestere 600D | 600D polyester

13,5 x 9,5 x 5 cm



.01 .08 .13 .07 .17



.05



43180  
**Ciliegia**

Beauty case con cerniera, con manico in tinta. | Beauty bag with zipper and puller in matching color.

Poliestere 600D | 600D polyester

22 x 6 x 14 cm



.23 .01 .07  
.08 .04 .05



.13



43182  
**Cipolla**

Beauty case con zip e pratico manico di trasporto. | Beauty bag with zip and practical carrying handle.

Poliestere 600D | 600D polyester

20 x 8,3 x 9,8 cm



.23 .08 .01



43995  
**Belgrado**

Pochette con chiusura zip colorata coordinata. Dettagli in PU all'estremità della zip e sul fronte. | Toiletry bag with zipper closure in matching colour. PU details at the end of the zipper closure and on the front.

Poliestere, Similpelle | Polyester, Leatherette

21 x 12 x 6 cm



.05

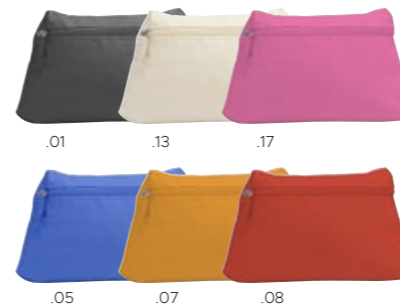


43065  
**Anne**

Pochette con bordi e dettagli in PU. Ampio scomparto principale con chiusura zip. Tasca frontale con zip. | Toiletry bag with polyester body with PU leather edges and details. Large main compartment with zipper closure. Front pocket with zip.

Poliestere 600D, Similpelle | 600D Polyester, Leatherette

28 x 16 x 7 cm



.01 .13 .17  
.05 .07 .08



43080  
**Relf**

Pochette. Chiusura con zip colorata coordinata. | Beauty bag with matching colour zipper.

Poliestere 600D | 600D polyester

22 x 14 x 6 cm



# UNISEX TOILETRIES BAGS

Practical and spacious unisex toiletries bags, with various compartments to carry your toiletries neatly.



43236  
**Dalian**

Beauty case unisex, chiusura zip. Vari scomparti. Ha un attaccapanni per poterlo appendere. Tasca frontale con chiusura zip. | Unisex beauty case, zip closure. Various compartments. It has a coat rack to hang. Front pocket with zip closure

Poliestere | Polyester

20 x 16 x 7 cm



.05

RECYCLED DENIM



43256  
**Piovene**



Pochette con cerniera e tirazip coordinati. | Clutch bag with zip and matching zip puller.

Cotone, Denim riciclato - 250 gr/m2 | Cotton, Recycled Denim - 250 gr/m2

22 x 5,5 x 16 cm



43223  
**Annatto**

Pochette con cerniera a contrasto e tirazip colorato coordinato. Effetto spugna. | Beauty case with towel texture. With contrasting zip and coordinated colored zip puller.

Poliestere | Polyester

25,5 x 20,5 cm

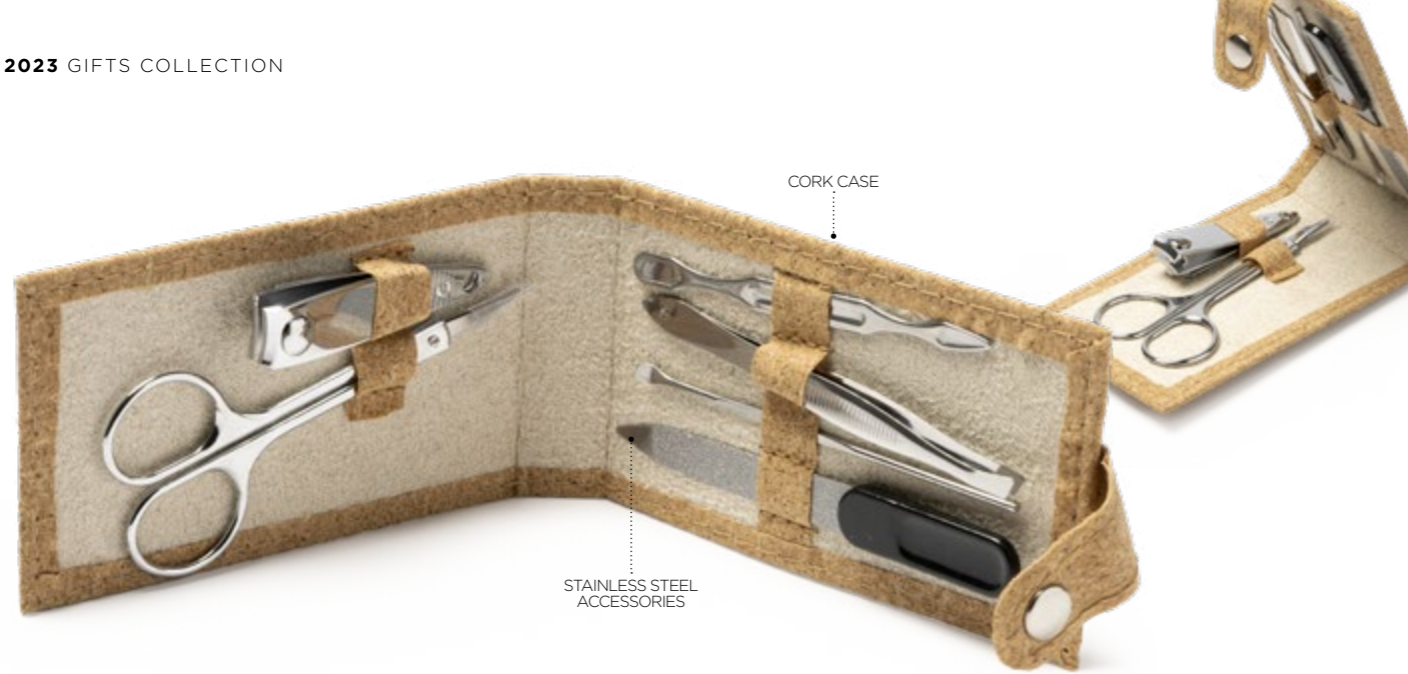


41122  
**Galtelli**

Pochette con chiusura con zip. | Toiletry bag with zipper closure.

Nylon | Nylon

20 x 10 x 10 cm



CORK CASE

STAINLESS STEEL ACCESSORIES



44317  
**Ferrara**



Kit per manicure con custodia in sughero e chiusura con bottone a pressione. Comprende forbicine in acciaio inossidabile, pinzette, tagliaunghie, lima e taglia cuticole. | Manicure kit with cork case and snap button closure. Includes stainless steel scissors, tweezers, nail clippers, file and cuticle cutter.

Sughero | Cork  
11 x 6 cm



.11



.13



44318  
**Illasi**



Kit per manicure in pouch di cotone con coulisse. Composto da lima per unghie e tagliaunghie. | Manicure kit in cotton drawstring pouch. Consisting of nail file and nail clipper.

Cotone | Cotton  
12 cm



.00



44296  
**Carvi**

Lima multiuso con cordino in cotone. | Multipurpose nail file with cotton cord.  
Carta vetrata, Bamboo | Sandpaper, Bamboo  
10,5 x 4 cm



4 PIECES

.21



44023  
**Nina**

Set Manicure, 4 pz. Include forbicina, spingi cuticole, pinzetta e taglia unghie. | Manicure set 4pcs. Includes scissors, cuticle pusher, tweezers and nail clipper.

Plastica | Plastic  
10 x 5,4 x 2,1 cm



5 PIECES

.06

.08

.05



44020  
**Lime**

Set manicure 5 pezzi. Include pinzette, bastoncini per cuticole, limetta e tagliaunghie. Fornito in pouch in nylon. | Manicure set 5 pcs. Includes tweezers, cuticle sticks, nail file and nail clipper. Presented in a nylon pouch.

Nylon | Nylon  
5,5 x 14 x 1 cm



4 PIECES

.02



44033  
**Guardavalle**

Set Manicure, 4 pz. Include forbicina, spingi cuticole, pinzetta e taglia unghie. | Manicure set 4pcs. Includes scissors, cuticle pusher, tweezers and nail clipper.

Pvc | pvc  
6,6 x 10,5 cm



WHEAT FIBER



.13



42102  
**Belluno**

Pettine | Comb  
Fibra di grano, PP | Wheat fiber, PP  
[ ] 2,7 x 17 cm



42112  
**Bali**

Spazzola per capelli | Wooden pring brush.  
Legno | Wood  
[ ] 13,5 x 3 x 4 cm



.00

.02



.11



42061  
**Sovizzo**

Pettine con manico. Fornito in confezione dal design eco. | Comb with handle. Supplied in eco-designed packaging.  
Bamboo | bamboo  
[ ] 3,5 x 18,4 cm



.11



42054  
**Peleo**

Pettine | Comb  
Bamboo | bamboo  
[ ] 14 x 4,5 cm

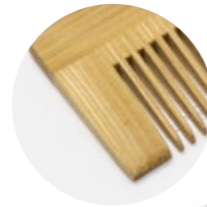


.11



42058  
**Arsìe**

Spazzola con molte setole per spazzolare più facilmente | Brush with lots of bristles for easier brushing  
Bamboo | bamboo  
[ ] 6 x 20 x 1,1 cm



.11



42062  
**Tramigna**

Pettine fornito in confezione dal design eco. | Comb supplied in eco-designed packaging.  
Bamboo | bamboo  
[ ] 13,8 x 3 cm



.11



42103  
**Belmopan**

Pettine | Comb  
Legno | Wood  
[ ] 12,5 x 5 cm







42131  
**Tormenta**



Specchio oversize realizzato in bambù. Ampia area di stampa sul retro. | Oversized mirror made of bamboo. Wide printing area on the back.

Bambù | bamboo  
10 x 22 x 0,8 cm



.11



.08



42003  
**Else**

Specchietto da borsetta con finitura satinata. | Folding mirror in a wide range of bright frosted colours.

Plastica | Plastic  
Ø 6 x 0,5 cm



.32



42209  
**Oswaldo**

Specchietto da borsetta con finitura in PU opaca. | Metallic mirror with a matt metallic PU finishing.

Metallo, Pu | Metal, Pu  
Ø 6 x 1 cm



NATURAL CORK



.11



42000  
**Bixo**

Specchietto pieghevole realizzato in sughero naturale e metallo cromato. Due specchi interni: 1X / 2X | Nature line folding mirror made of natural cork and chromed metal. Two inside mirrors: 1X / 2X

Sughero | Cork  
2 x Ø 6,1 cm



.00



42101  
**Aneto**



Specchietto | Mirror  
Legno | Wood  
Ø 7 x 0,9 cm



.02



44127  
**Brian**

Specchietto da borsetta con elegante finitura bianca in PU. Con due specchietti: 1X e ingrandimento 2X. | Folding mirror in an elegant white PU leather finish. With two inner mirrors: 1X and 2X magnifying.

Similpelle | Leatherette  
0,9 x Ø 6,5 cm



.01

.16

.32



42127  
**Avventurina**

Specchietto da borsetta, con finitura metallizzata. | Mirror with metallic finish.

Plastica | Plastic  
Ø 6,6 cm





42002  
**Susi**

Spazzola pieghevole con specchietto. | Folding brush with mirror

Plastica | Plastic

∅ 6,6 x 2,8 cm



42043  
**Grundtal**

Spazzola con sistema districante e denti in diverse lunghezze. | Minimalist design brush with anti-tangle system and spikes in different lengths.

Plastica | Plastic

6,7 x 9 x 4,5 cm



42042  
**Lisabo**

Spazzola per capelli | Hairbrush

Plastica | Plastic

7,3 x 18,5 x 3,6 cm



42208  
**Portento**

NEW

Spazzola per capelli a forma di goccia, con finitura metallizzata. Denti a 3 lunghezze. Fornita in scatola in plastica | Drop-shaped hair brush with updated finish in metallic colours. Tooth at three heights. Presented in transparent plastic box

Plastica | Plastic

6,5 x 8,8 x 4 cm



42114  
**Galluccio**

Spazzola per capelli con specchio incorporato | Hairbrush with built-in mirror.

Plastica | Plastic

15 x 7,5 x 3 cm



43257  
**Quarto**



Set composto da spazzolino da denti e clessidra. Fornito in una pouch con chiusura con zip. | Set consisting of toothbrush and hourglass. Supplied in a zip lock pouch.

Bamboo, Plastica, Cotone | Bamboo, Plastic, Cotton

Case: 20,5 x 7 cm / Brush: 2 x 17,5 cm / Hourglass: 2,5 x 8,5 cm



43154  
**Lama**



Spazzolino con setole colorate. Con cappuccio protettivo. Fornito in confezione color avana. | Toothbrush with colour bristles, and protector cap. Presented in a kraft box.

Bamboo | bamboo

16,5 x 1,5 cm



43992  
**Bellizzi**



Spazzolino da denti, fornito in confezione singola | Toothbrush made of natural bamboo wood, presented in a individual Kraft box.

100% Bamboo | 100% Bamboo

1,4 x 17,5 cm



43026  
**Cruz**

Portaspazzolino con clessidra | Toothbrush holder with hourglass

Plastica | Plastic

14 x 8,5 x 6,5 cm



43235  
**Harbin**

Set per la pulizia interdentale, include custodia con chiusura di sicurezza. | Interdental cleaning set, includes case with safety lock.

PP | PP

8,1 x 3 cm

WHEAT FIBER



43167  
**Valiuma**



Spazzolino richiudibile realizzato in PP e in fibra di grano antibatterici. | Foldable toothbrush made of PP and antibacterial wheat fiber.

Fibra di grano, PP (antibatterico) | Wheat fiber, PP (antibacterial)

10x2,2x1,2 cm(closed) - 15,5x2,2x1,2 cm(open)

PLA 100% COMPOSTABLE



43196  
**Bella di notte**



Spazzolino da denti in PLA. Setole bianche di durezza morbida. | Toothbrush in PLA. Soft white bristles.

PLA 100% Compostabile | PLA 100% Compostabile

18,4 x 1,4 x 1,6 cm



.08 .07 .18 .04 .02



48004  
**Sara**

Spazzolino da viaggio con finitura soft touch. | Collapsible toothbrush with soft touch finishing.

Plastica | Plastic

9x2x1,5 cm



.02



43128  
**Teddy**

Spazzolino pieghevole da viaggio | Foldable toothbrush

Pvc | pvc

8,5 x 1 x 1 cm



.06 .05 .07 .04 .08



43002  
**Elias**

Spazzolino da denti per bambini. Ventosa alla base | Toothbrush With suction cups on the base.

Plastica | Plastic

3 x 14,6 x 1 cm



BAMBOO

.00



72022  
**Wuxi**



Bilancia pesapersona con display digitale. Piedini antiscivolo. Dotata di misuratore di temperatura ambientale. Portata massima 180kg. Alimentata con 2 batterie AAA (non incluse). | Bathroom scale, with digital display. Non-slip base. Equipped with an ambient temperature meter. Maximum weight 180kg.

Bamboo | bamboo

28 x 28 x 3 cm



MAXIMUM WEIGHT 180KG

0.00<sup>20</sup>

MOVA  
1982



TRASPARENTE POUCH



.08 .04 .06 .05

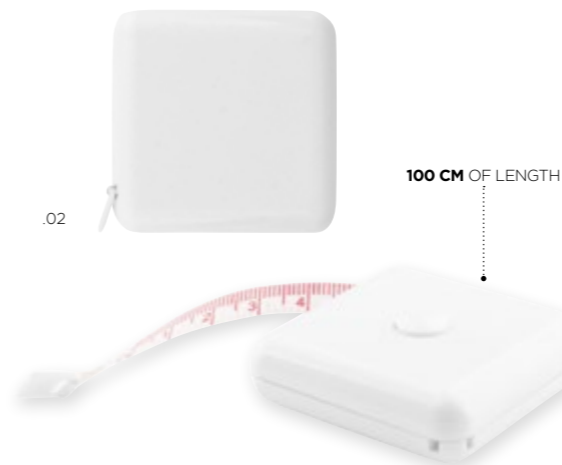


43133  
**Greccio**

Set composto da spazzolino e clessidra, Spazzolino con ventosa alla base. Clessidra da 2 minuti. Fornito in pouch singola | Set of toothbrush and sand timer clock in bright tones. brush suction cups on the base; and 2 minute sand timer clock. Presented in an individual bag with zipper.

Plastica | Plastic

8 x 20 x 2 cm



100 CM OF LENGTH

.02

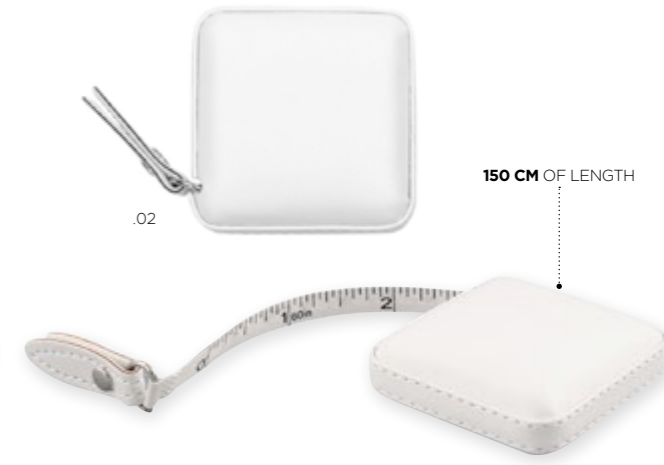


47150  
**Kinabalu**

Metro da 100cm. Sistema metrico in centimetri e pollici. Riavvolgibile con bottone. | Measuring Tape with 100cm of length. Metric system in centimetres/inches. Retractable with button.

Plastica | Plastic

4,5 x 4,5 cm



150 CM OF LENGTH

.02



47157  
**Delta**

Metro a nastro rifinito in similpelle di 150 cm di lunghezza. | Tape measure finished leatherette 150 cm in length

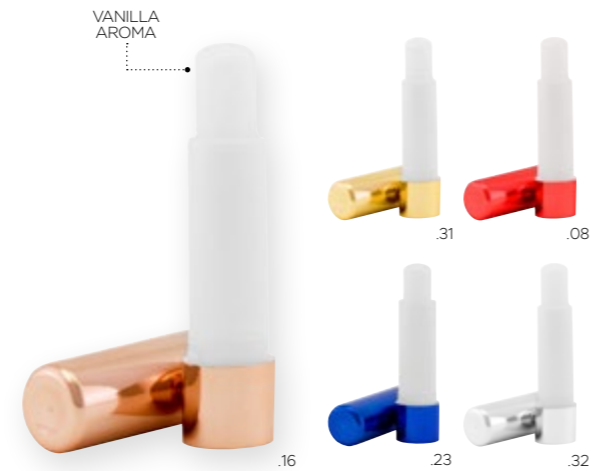
Similpelle | Leatherette

5 x 5 x 1,5 cm



44011  
**Loeb**

Burrocacao semitrasparente con SPF 15 | Lipbalm, SPF 15 protection  
Plastica | Plastic  
6,8 x Ø 1,9 cm



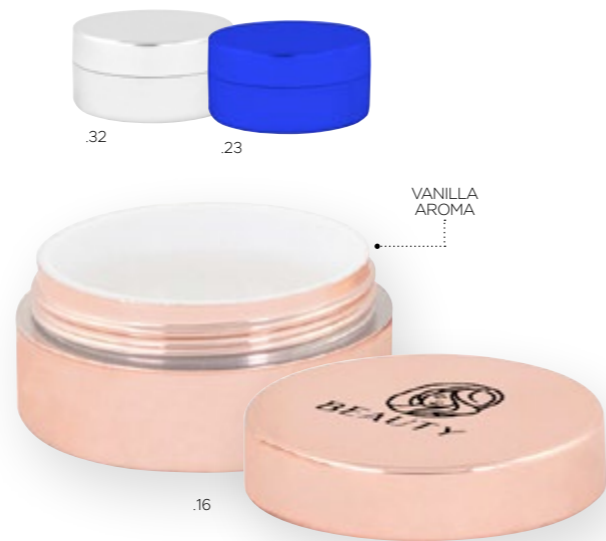
44130  
**Lampo**

Burrocacao classico con tubetto con finitura metallizzata, all'aroma di vaniglia. Protezione SPF15. | Lip balm in a tube with a metallic finishing, with vanilla flavour. SPF15 protection.  
Abs | Abs  
Ø 1,9 x 7 cm



44038  
**Bernina**

Burro cacao. Aroma vaniglia. SPF15. | Lipblam. Vanilla flavour. SPF 15.  
Fibra Bamboo, Abs | Bamboo fiber, Abs  
7 x Ø 1,9 cm



44126  
**Azzurrite**

Burrocacao in vasetto con finitura metallizzata. Profumato alla vaniglia. Protezione SPF. | Lip balm with metallic plastic box. With vanilla flavour. SPF protection.  
Abs | Abs  
Ø 3,5 x 1,8 cm

## LIP BALMS WITH VANILLA FLAVOUR

Sphere of lip balms in elegant colours. SPF15 protection and dermatologically tested



44100  
**Bellona**

Burrocacao sferico. Profumo di vaniglia, protezione SPF15. | Sphere of lip balms in elegant colours golden, silver and pink golden. Vanilla flavour, with SPF15 protection and dermatologically tested.

Plastica | Plastic  
Ø 3,8 cm





Massaggiatore facciale Guasha. | Guasha facial massager.

Pietra naturale | Natural stone

4,5 x 7 cm



Scaldamani riutilizzabile effetto riscaldante, lunga durata. | Reusable thermal patch with heat effect, long lasting.

Plastica | Plastic

8 x 10 x 1 cm

NEW



Massaggiatore a rullo per il viso, in giada naturale | Facial massage roller, made with natural jade.

Giada, Metallo | Jade, Metal

5,5 x 10,5 cm

.00



Massaggiatore | Cherry wood massager roller.

Legno di ciliegio | Cherry wood

15 x 2,5 x 8 cm

.00



NATURAL CORK



Palline da massaggio in sughero per schiena, spalle, piedi e altro. Include due palline, fornite in un sacchetto di cotone. | Cork massage balls for back, shoulder, foot among others. Includes two balls and a cotton bag.

Sughero | Cork

Ø 6 cm



Massaggiatore per cuoio capelluto, con punte in silicone per massaggiare. | Scalp massager, with silicone tips for massaging.

PP, Fibra di grano, Silicone | PP, Fiber Wheat, Silicone

Ø 8 x 7 cm

WHEAT FIBER

.00

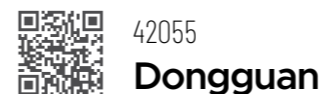
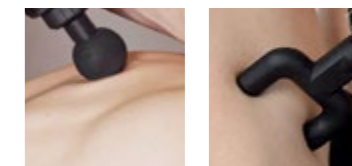
NEW ECO



6 LIVELLI DI FREQUENZA DI VIBRAZIONE  
6 LEVELS OF VIBRATION FREQUENCY

4 TESTE DIVERSE  
4 DIFFERENT HEADS

.32



Pistola per massaggio corpo e viso, 6 livelli di intensità, 4 accessori. Ricaricabile tramite cavo. | Body and face massage gun, 6 intensity levels, 4 accessories. Rechargeable via cable

Plastica | Plastic

17 x 21 cm





.06



.00



43036  
**Hilla**

Set bagno per bambini in zainetto. Include manopola, spugna e una paperella. | Children bath set in backpack with duck theme. Includes mitt, sponge and a duck.

Vario | Varied

📏 26 x 18 x 9,5 cm



42056  
**Arsiero**

Spugna da bagno con laccetto | Bath sponge with string

Polietilene | Polyethylene

📏 Ø 10 cm / Nastro: 4 x 2 cm

NEW



.09



.17



.00



46070  
**Iodo**

Spugna 20gr | Sponge 20gr

Vario | Varied

📏 Ø 9,7 x 8 cm



18050  
**Bauska**

Asciugamano a forma di rosa con gambo. | Towel in a rose shape with stem.

100% Cotone | 100% Cotton

📏 23 x 5,5 cm



43209  
**Banano**

Luscino terapeutico per il collo, aroma di lavanda, fornito con una fodera di cotone. | Therapeutic cervical cushion with lavender scent, presented in a cotton cover.

Semi di grano e lavanda naturale, Tessuto cotone | Wheat seeds and natural lavender, Cotton fabric

📏 48 x 15 cm



bespoke  
expert in special productions

# YOUR BESPOKE TISSUE BOXES

Customizable all over



MOQ  
500 pcs

1 **Scegli o crea la forma su misura per il tuo box**

Select the size and box shape or create your own one

2 **Applica il tuo design in base alle tue esigenze...**

Insert your design based on your needs

Verifica modelli e disponibilità sul sito web!  
Check all the available models on our website!



.00



43258

**Creazzo**



Shampoo vegetale solido da 40 g al profumo di giacinto, fornito in pouch. Ogni tavoletta equivale a 125 ml di shampoo liquido. | 40 g solid vegetable shampoo with hyacinth scent, supplied in pouch. Each tablet is equivalent to 125ml of liquid shampoo.

RSPO vegetale sindopale, 1% giacinto 722 | RSPO vegetable sindopal, 1% hyacinth 722

Soap: 5 x 5 x 1,2 cm / Bag: 9 x 10,5 cm



.00



43199

**Mesembriantemo**



Sapone vegetale prodotto in Europa, fornito in sacchettino con chiusura con coulisse. | Vegetable soap made in Europe. Presented in a drawstring cotton bag.

Vegetale | Vegetable

Ø 6,5 x 1 cm, Bag: 9 x 10,5 cm



.13



50999

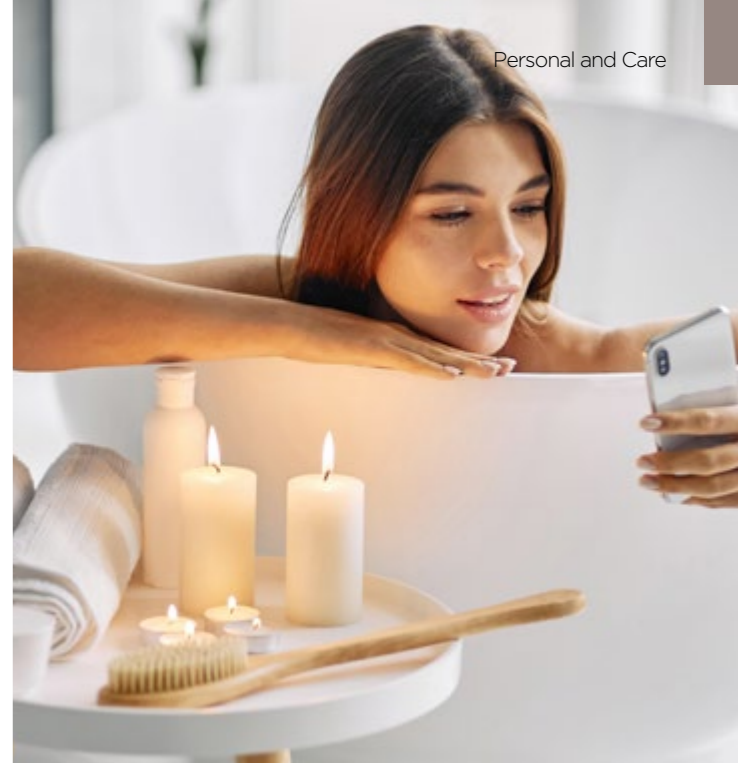
**Bellusco**



Ciabattine. Suoletta spessa 5mm. | High quality slippers. Sole of a thickness of 5mm.

Cotone | Cotton

Sizes 39 / 43



.00



42051

**Barbabietola**



Spugna esfoliante naturale con un manico piatto in legno per una facile presa e un laccetto per appenderla. | Natural scrub sponge with flat wooden handle for easy grip and hanging rope.

Luffa, Legno | Luffa, Wood

7 x 37 x 7 cm



.00



42052

**Berberidopsis**



Spugna Konjac con sacchetto di cotone in rete per una migliore ventilazione. | Konjac sponge with half cotton and half mesh bag

Konjac | Konjac

Bag: 11 x 12,5 cm / Ø 7 x 3,5 cm



.00



42049

**Bagolaro**



Spugna esfoliante con fascia elastica per una migliore impugnatura. | Sponge and scrub with elastic band for easy handling.

Cotone | Cotton

11 x 15 cm



.02

.01



50044

**Cleo**

Ciabattine unisex realizzate in comodo cotone/poliestere con interno imbottito. Include una pratica pouch in TNT. Taglia unica 36-43. | Unisex hotel slippers in comfortable cotton/polyester with padded lining. Practical non-woven pouch included. One size (36 to 43).

Cotone, Poliestere. | Cotton, Polyester.

One size Size 36-43







.13



43168  
**Trota**



Set composto da 2 dischetti struccanti riutilizzabili, fornito in pouch di cotone con chiusura con coulisse. | Set of two reusable make-up remover disks, presented in a cotton bag with drawstring closure.

Bambù, cotone | Bamboo, cotton  
 [ ] Disk: Ø 8 cm / Bag: 11 x 12 cm



.16



44295  
**Carum**

Spugnetta per il makeup con coperchio e cordino. | Makeup sponge with cover and lanyard.

Spugna, PE | Sponge, PE  
 [ ] Guaina: Ø 5 x 7 cm / Spugna: Ø 4 x 7 cm



.11



44316  
**Arzignano**



Pennello da trucco con morbide setole | Soft bristle makeup brush

Legno di faggio, setole sintetiche | Beech wood, synthetic bristles  
 [ ] 2 x 10,5 cm



.02



18089  
**Piombino**



Accappatoio da doccia | Bathrobe

Microfibra | Microfiber  
 [ ] S/M - L/XL



10 ml



.08

.15

.03



43234  
**Nanchino**

Spruzzino retrattile con meccanismo a torsione, girando il meccanismo lo spruzzino rientra a scomparsa. Capacità 10ml (liquido non incluso) | Retractable sprayer with torsion mechanism, by turning the mechanism the sprayer retracts and retracts. Capacity 10ml (liquid not included)

Plastica | Plastic  
 [ ] Ø 2,2 x 10,9 cm



10 ml



MADE OF BAMBOO

.13



43248  
**Asolo**



Flacone spray da 10 ml | 10 ml spray bottle  
 Bamboo, vetro, polipropilene | Bamboo, glass, polypropylene  
 [ ] 1,8 x 10 cm



.02

.01

.03



42064  
**Zoppè**



Fascia con chiusura in velcro realizzata in spugna. | Headband with Velcro closure made of sponge.  
 Poliestere, Poliammide | Polyester, Polyamide  
 [ ] 8,5 x 69 cm



.31

.01



42057  
**Asiago**



Elastico per capelli con etichetta in tessuto per la personalizzazione | Hair elastic band with label for personalization  
 Raso | Satin  
 [ ] Ø 5 cm / Elastic: 3 cm



.11



41139  
**Arzergrande**



Braccialetto realizzato in legno. Particolarmente adatto all'incisione laser. | Bracelet made of wood. Particularly suitable for laser engraving.  
 Legno di acacia nilotica | Nilotic acacia wood  
 [ ] 8,4 x 8,4 x 2,2 cm

# NYLON WALLETS

With inside compartments and keychain.



41116  
**Azov**

Portafoglio con tasche interne, una aperta e una con zip. Anellino portachiave interno. Chiusura con velcro. | Wallet with inside pockets, one open and one with zipper closure. Inside keyring. Velcro closure.

Nylon | Nylon  
12,5 x 8 x 1,4 cm



.45



41118  
**Tolyatti**

Portafoglio con scomparto interno per banconote, tasca per monete con chiusura in velcro, e scomparti per carte. Chiusura in velcro. | Wallet with inside compartment for bills, coin pocket with velcro closure and cards compartment. Velcro closure.

Nylon | Nylon  
12,5 x 9,5 cm



.45



.45



41117  
**Toksovo**

Portafoglio con tasche interne. Anellino portachiave interno. Chiusura con velcro. | Wallet with inside pockets. Inside keyring. Velcro closure.

Nylon | Nylon  
8 x 4,5 cm



41125  
**Gamberale**

Portachiavi a forma di borsetina con chiusura zip. | Keychain in handbag shape with zipper closure

Nylon | Nylon  
10 x 5,5 cm



.45



.31 .32



.08 .02



.01



.13



.01



43125  
**Genova**

Portamonete con finitura metallizzata e tirazip in metallo. | Pvc coin purse with metallic finish and a metallic pull tab.

Similpelle | Leatherette

12 x 8 cm



41143  
**Revine**

Portamonete con tirazip con dettaglio color oro. | Coin purse with zip puller with gold-colored detail.

Cotone riciclato - 280 gr/m<sup>2</sup> | Recycled cotton - 280 gr/m<sup>2</sup>

13 x 3 x 9 cm



42060  
**Omlopp**

Portamonete, con chiusura zip, tirazip in PU | Coin purse with zipper closure, with PU puller

Cotone - 220 gr/m<sup>2</sup> | Cotton - 220 gr/m<sup>2</sup>

11 x 2,5 x 9 cm



.02 .08 .01



.23 .06 .07



.17 .04



41134  
**Jayson**

Portamonete con portachiavi integrato. Chiusura con zip colorata coordinata. | Coin purse with integrated key ring. Closure with coordinated colored zip.

Similpelle | Leatherette

10,5 x 0,5 x 7,5 cm



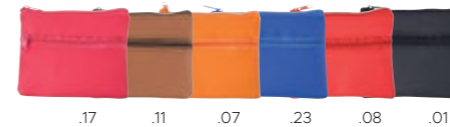
RECYCLED PLASTIC



.02 .23 .08



.04 .01



.17 .11 .07 .23 .08 .01



.04 .06



.08



43189  
**Ciro**

Pochette con doppia cerniera in tinta. | Pouch with matching double zip.

Similpelle RPET | RPET leatherette

10,5 x 9 cm



41793  
**Öludeniz**

Porta monete. Scomparto unico e tasca frontale con chiusura zip coordinata. Fodera interna coordinata. | Coin purse with main compartment and front pockets with matching zipper closure.

Similpelle | Leatherette

10,5 x 9 cm



41040  
**Hele**

Portamonete click-clack | Click-clack purse

Nylon 70D | 70D nylon


9 x 7 cm






 49045  
**Zenz**  
Cravatta | Tie  
Poliestere | Polyester  
150 cm




 43098  
**Clematide**  
Pouch con chiusura con coulisse. | Sachet with string closure.  
Poliestere | Polyester  
9,5 x 10 cm



 43094  
**Urano**  
Pouch. Chiusura con coulisse colorata coordinata. | Sachet with matching colour ribbon closure.  
Floccato | Flocked  
8 x 10 cm




 43222  
**Anice**  
Scatolina porta gioielli con specchio nella parte superiore e manico in similpelle per una facile apertura. | Small Bamboo jewelry box with mirror  
Bamboo, Similpelle | Bamboo, Leatherette  
8 x 4 cm



 43261  
**Valdagno**  
Custodia per gioielli con due cinturini, una tasca aperta e una tasca con zip. | Jewellery case with two straps, one open pocket and one zip pocket.  
Cotone - 200 gr/m2 | Cotton - 200 gr/m2  
Opened: 18 x 30 cm / Closed: 18 x 10 cm



 41352  
**Lansing**  
Pouch portacellulare particolarmente adatta alla sublimazione | Smartphone pouch especially designed for sublimation  
Poliestere | Polyester  
13 x 8 cm

## BEAUTY ACCESSORIES

Small bamboo jewelry box with mirrors.



 **46935 Bellegra** 

Portachiavi ottenuto dal taglio del legno di faggio. Disponibile rotondo o ovale. | Keychain Obtained from cuts of beech wood. Available in oval and rounded colours.

Legno | Wood

 Ø 0,5 x 4,4 cm (Round) - 6 x 0,3 x 3,5 cm (Oval)




 **82073 Scalogo** 

Portachiavi con funzione di supporto telefono | Keychain with cell phone holder function

Bamboo | bamboo


 8,5 x 4 x 1,6 cm






 **46167 Ariano**  

Portachiavi a forma di casa con un lato in metallo e uno in bambù. | House shaped keyring with one side in metal and one in bamboo.

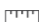
Metallo, Bamboo | Metal, Bamboo

 4 x 7 x 0,3 cm

 **46168 Arquà**  

Portachiavi rotondo con un lato in metallo e uno in bambù. | Round keyring with one side in metal and one in bamboo.

Metallo, Bamboo | Metal, Bamboo

 4 x 7 x 0,4 cm



 **46166 Darmstadtio** 

Portachiavi disponibile in due formati con elegante finitura in similpelle | Natural wood keychain in two sizes with elegant leatherette finish.

Legno, similpelle | Wood, leatherette

 8,5 x 0,5 x 3,8 cm (Round)- 3 x 0,5 x 10 cm (Oval)



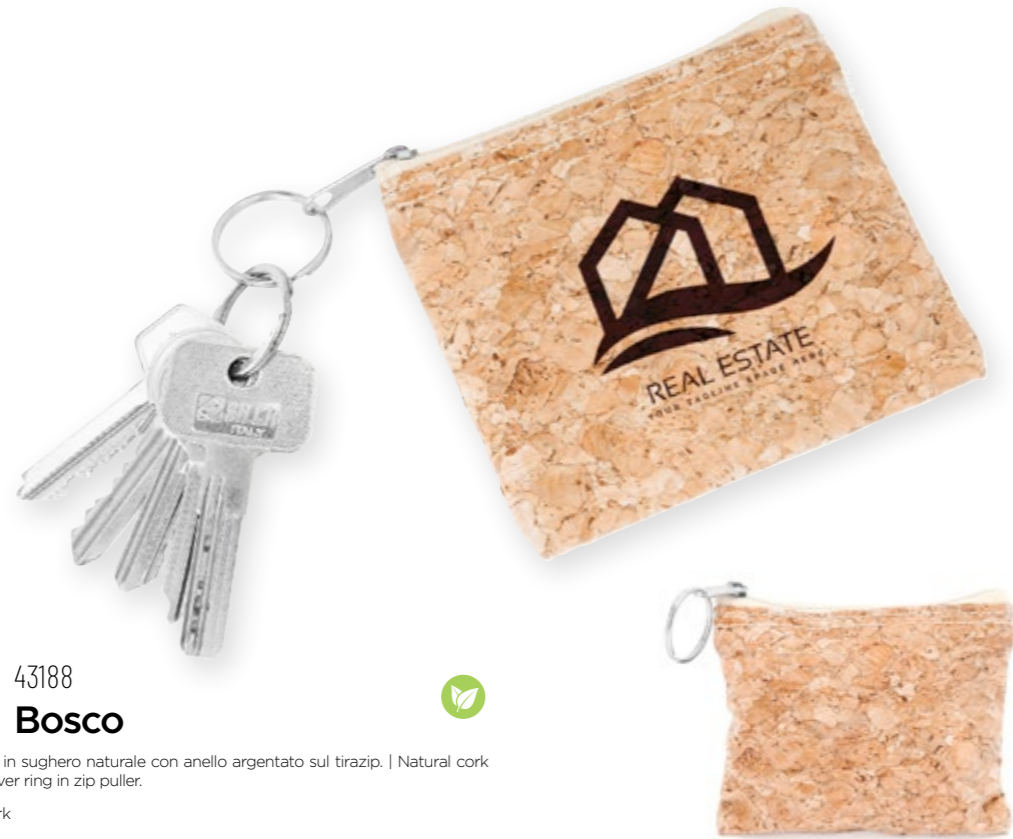
 **46993 Bellante** 

Portachiavi realizzato in legno di faggio, disponibile nella forma rotonda o quadrata. | Keychain made of natural beech wood, available in squared and round designs.

Legno | Wood

 Ø 7,2x0,6x3,9cm (Round)- 3x0,6x8,8cm (Rectangular)

NATURAL CORK



43188  
**Bosco**

Portamonete in sughero naturale con anello argentato sul tirazip. | Natural cork purse with silver ring in zip puller.

Sughero | Cork

10 x 9 x 2 cm



.11



47092  
**Didi**

Portachiavi con nastro in poliestere e moschettone, e laccettino portacellulare. | Keychain with polyester ribbon with carabiner and phone holder

Metallo, Poliestere | Metal, Polyester

9 x 2 cm



47040  
**Erykha**

Portachiavi con moschettone. Con anello portachiavi. | Keyring carabiner with ring.

Alluminio | Aluminum

3 x 5,6 x 0,5 cm

NATURAL CORK



.11



46137  
**Rybachiy**

Portachiavi a forma di tappo, prodotto con materiale naturale. | Oenologist keychain, manufactured with natural materials.

Sughero | Cork

2,3 x 4,5 cm



NATURAL CORK



.00A

.00B



46934  
**Bellary**

Portachiavi, disponibile nella forma rettangolare o rotonda. | Keychain of nature line made of cork. Available in squared and round designs.

Sughero | Cork

Ø 0,6x7,9 cm (Round) - 3,9x0,6x8,1 cm (Rectangular)

NATURAL CORK



.05

.01



46165  
**Copernicio**

Portachiavi galleggiante con cordino robusto in poliestere. | Floating cork keychain with sturdy polyester rope.

Sughero, Poliestere | Cork, Polyester

9 x 4 x 1,5 cm



.08

.16

.01



46172  
**Monticello**

Portachiavi con moschettone, pompon in cotone e targhetta in metallo. | Keychain with carabiner, cotton pompon and metal tag.

Cordoncino di Cotone, Metallo | Cotton Cord, Metal

4 x 15 cm



.05

.08

.01



46171  
**Maserà**

Portachiavi con moschettone. | Keychain with carabiner.

Cotone | Cotton

2,5 x 20 cm





.05 .08 .06



.06 .04 .08 .01



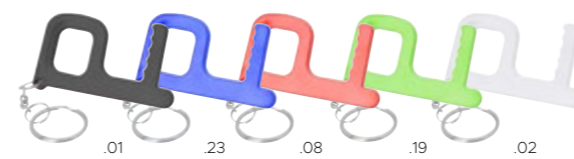
.02



.05



.07



.01 .23 .08 .19 .02



.02 .06 .08 .05 .00



.01



47202  
**Godiasco**

Portachiavi a casco di sicurezza. | Keychain in safety helmet shape

Plastica | Plastic

3,7 x 3,8 x 2,2 cm



49047  
**Vera**

Portachiavi galleggiante | Floating keychain

Eva | Eva

6,8 x 3,3 x 1,4 cm



45010  
**Seza**

Portachiavi galleggiante ad infradito | Floating flip-flop keyring

Eva | Eva

3 x 6,5 x 0,9 cm



44101  
**Diogene**

Portachiavi antibatterico | Antibacterial keychain

Plastica | Plastic

7 x 4 x 0,4 cm



47005  
**Effi**

Portachiave con porta accendino con clip | Lighter holder with keychain and clip

Plastica, Metallo | Plastic, Metal

9 x 3 x 1,5 cm



.05 .06 .04 .07 .08



.48 .02 .58



.08 .23 .03 .01



.32



.23 .08 .07 .19



.01



47143  
**Aventurine**

Portachiavi a forma di fiches | Poker fiches keychain

Plastica | Plastic

Ø 4,2 cm



46152  
**Clea**

Portachiavi bandiera in poliestere con rinforzo in PU. | Polyester keyring with a flag design and PU reinforcement.

Similpelle | Leatherette

12 x 3 cm



47156  
**Bocca di leone**

Portachiavi rettangolare | Elongated textile keychain

Poliestere | Polyester

2 x 8 cm



46059  
**Roda**

Portachiavi con parte centrale girevole. | Keychain with rotating central part.

Metallo | Metal

3,5 x 9,5 cm



46021  
**Tare**

Portachiavi con parte centrale girevole e inserto in PU | Keychain with rotating central part and PU detail.

Metallo | Metal

3,8 x 5,5 x 0,4 cm



.01 .05



Portachiavi con moneta, con luce con 2 LED e moneta removibile. | Keychain coin with 2 LED flashlight and with removable coin.

Plastica | Plastic

7 x 1 x 2,5 cm



.07 .02 .06 .01 .05 .08



Portachiavi con moneta. Moneta removibile. | Keychain coin with removable coin.

Plastica | Plastic

2,9 x 5,7 x 0,4 cm



.01



Portachiavi rettangolare. Fornito in scatola in cartoncino | Rectangular keychain made in pu, with metallic top. Packed in black cardboard box

Metallo, Pu | Metal, Pu

2,5 x 6,5 cm



.01



Portachiavi con parte in metallo. Fornito in confezione singola | Keychain with its upper half in a metallic finish. Presented in a black individual box.

Similpelle, Metallo | Leatherette, Metal

1,8 x 10 cm



.32



Portachiavi in metallo, particolarmente adatto all'incisione laser. | Metal key ring, particularly suitable for laser engraving.

Metallo | Metal

3 x 7,5 cm



.06 .07 .04 .08 .05 .02 .17



.23 .16 .18 .08 .02 .01



.01



Portachiavi con moneta removibile, chiusura con moschettone. | Keychain coin with removable coin and closure carabiner.

Metallo | Metal

Ø 2 cm



NEW

Gancio appendiborsa disponibile in diversi colori. | Bag hanger available in different colors.

Metallo | Metal

4,2 x 0,6 cm



.32



Portachiavi a forma di macchina | Keychain in a car shape

Alluminio | Aluminum

4,5 x 3,6 x 0,2 cm



.32



Portachiavi a forma di automobile. | Car-shaped metallic keychain

Metallo | Metal

4,5 x 2,7 cm







.08 .07 .29 .23 .03



46030  
**Tami**

Portachiavi rettangolare con nastro in poliestere colorato. | Rectangular key chain. Aluminium with coloured polyester webbing

Metallo | Metal

8 x 3 x 0,5 cm



.01



.05 .08 .01



46142  
**Cirmolo**

Portachiavi a forma di macchinina. Fornito in scatola in cartoncino | Car shaped Keychain. Presented in black cardboard box

Alluminio | Aluminum

3,5 x 1 x 2,5 cm



.05 .08 .01



47657  
**Bonita**

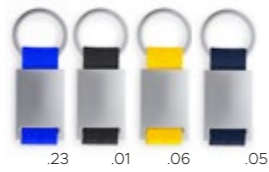
Portachiavi a forma di casetta. Laccetto in silicone. Fornito in scatola in cartoncino. | Aluminium house shape Keychain. Tow silicone for keys. Presented in black cardboard box

Alluminio | Aluminum

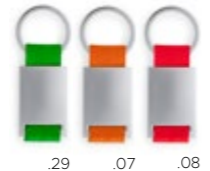
3,5 x 1 x 3 cm



.02



.23 .01 .06 .05



.29 .07 .08



.08 .07 .29 .06 .05



46133  
**Chemal**

Portachiavi con nastro. Parte centrale in metallo adatta all'incisione laser. | Keychain with ribbon. Central metal part suitable for laser engraving.

Metallo | Metal

9,5 x 3 x 0,5 cm



46007  
**Temme**

Portachiavi con corpo in metallo e nastro colorato, fornito in confezione regalo. | Keychain with metal body and polyester ribbon, supplied in gift box

Metallo | Metal

6 x 2,5 x 0,5 cm



46020  
**Raba**

Portachiavi con parte centrale in metallo e laccetto in silicone. | Keychain with metal central part and rubber string

Metallo | Metal

3,5 x 6,5 x 0,5 cm



.01 .07 .19 .08 .05



.08 .19 .17 .05



47091  
**Genuri**

Portachiavi rotondo con laccetto gommato. Fornito in scatola in cartoncino. | Round keychain with rubber towrope. Presented within a black cardboard box.

Metallo | Metal

Ø 2,5 cm



.06 .00 .02 .09 .11 .40

47201  
**Jackson**

Portachiavi antistress disponibile in vari temi. | Antistress keychain available in different theme.

Gommapiuma | Foam rubber

Ø 4 cm



.07



.01 .02 .06 .23



.08

29184  
**Venere**

Antistress a forma di cubo | Anti-stress cube

Gommapiuma | Foam rubber

4,5 x 4,5 cm



.40

29038  
**Enri**

Antistress a forma di pallone. | Football shaped antistress.

Gommapiuma | Foam rubber

Ø 6,3 cm



.06



.08 .06



.05



.05



.01

47204  
**Gadesco**

Portachiavi antistress a forma di lampadina. | Keychain with antistress in light bulb shape.

Gommapiuma | Foam rubber

6,7 x 3,5 cm

29056  
**Elsa**

Portachiavi antistress | Original anti-stress keychain

Gommapiuma | Foam rubber

3,5 x 8,2 x 1,9 cm

29137  
**Arda**

Portachiavi pallina antistress | Original anti-stress keychain with spherical body

Gommapiuma | Foam rubber

Ø 4 cm

29318  
**Vigo**

Pallina antistress, design pallina da tennis | Stress ball, tennis ball design

Similpelle | Leatherette

Ø 6cm

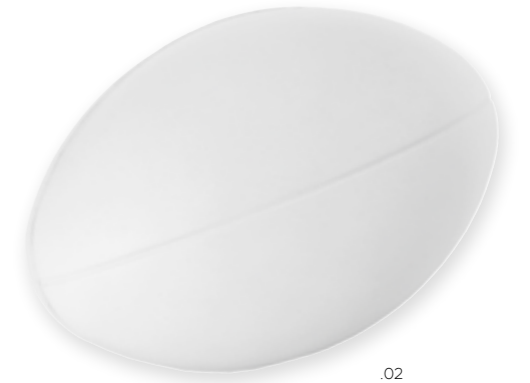
**NEW**

29241  
**Celosia**

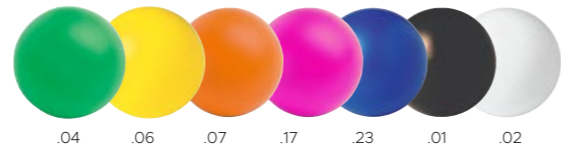
Antistress pillola | Anti stress pill

Gommapiuma | Foam rubber

9 x 5,8 x 5,8 cm



.02



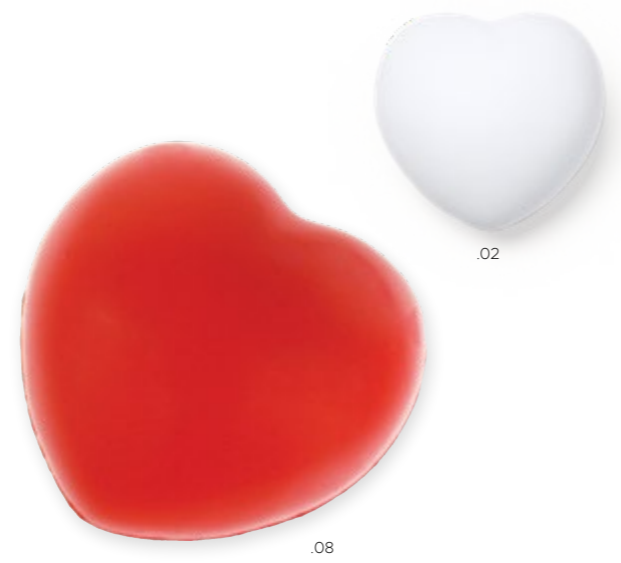
 29054  
**Frek**  
Pallina antistress | Anti-stress ball  
Gommapiuma | Foam rubber  
📏 Ø 6,3 cm



 29062  
**Kale**  
Antistress a forma di maggiolino | Anti stress car  
Gommapiuma | Foam rubber  
📏 9,5 x 5,5 x 5,2 cm

 29228  
**Praia**  
Antistress a forma di nave | Boat anti-stress  
Gommapiuma | Foam rubber  
📏 10 x 5,2 x 5 cm

 29068  
**Ria**  
Antistress a forma di aeroplano | Anti stress plane  
Gommapiuma | Foam rubber  
📏 10 x 9 x 4,5 cm



 29063  
**Lovi**  
Antistress a forma di cuore | Anti-stress heart  
Gommapiuma | Foam rubber  
📏 7 x 6,7 x 5,4 cm



 29151  
**Tede**  
Antistress a forma di goccia | Anti stress drop  
Gommapiuma | Foam rubber  
📏 6,5 x 11 cm



 29998  
**Kungsholmen** NEW  
Antistress a forma di goccia | Anti-stress droplet, soft body with shiny PU padding.  
Gommapiuma | Foam rubber  
📏 8 x Ø 6 cm



44052  
**Borbera**

Penna spray igienizzante mani. Contiene 10 ml di soluzione detergente. | Spray pen cleans and sanitizing hands. 10 ml hand cleansing gel.

Plastica | Plastic

13,4 x Ø 1,6 cm



MADE IN ITALY

500 ML



44083  
**Beirut**

Spray Igienizzante per superfici da 500 ml. Non ha bisogno di risciacquo. | Spray Sanitizer for surfaces, 500 ml

Plastica | Plastic

23 x Ø 6,2 cm



MADE IN ITALY

500 ML

SOAP



44081  
**Boezio**

Sapone Igienizzante Naturale da 500 ml. Rimuove sporco, germi e batteri | Sanitizing soap, 500 ml

Plastica | Plastic

23 x Ø 6,2 cm



MADE IN ITALY

250 ML



44077  
**Dayron**

Gel Igienizzante Naturale da 250 ml con antibatterico naturale. | Sanitizing gel, 250 ml

Plastica | Plastic

19,5 x Ø 4,5 cm



MADE IN ITALY

500 ML



44085  
**Donnie**

Gel Igienizzante Naturale da 500 ml con antibatterico naturale. | Sanitizing gel, 500 ml

Plastica | Plastic

23 x Ø 6,2 cm



10 ML



44297  
**Cerio**

Gel idroalcolico spray da 10ml con moschettone. | 10 ml hydroalcoholic gel with spray and snap hook

Soluzione idroalcolica 75% alcol, PP, PS | Hydroalcoholic solution 75% alcohol, PP, PS

14,8 x 1,5 x 1,5 cm



30 ML



44110  
**Apollo**

Flacone gel idroalcolico da 30 ml con erogatore spray. | 30 ml sanitizing gel with spray.

Plastica | Plastic

10,1 x Ø 2,7 cm



MADE IN ITALY



44079  
**Focus**

Gel Igienizzante in tanica da 5 L con antibatterico. | Sanitizing gel, 5 L

Plastica | Plastic

19,6 x 25,6 x 14,5 cm



MADE IN ITALY



44084  
**Aureo**

Igienizzante per superfici in tanica da 5 L. Non ha bisogno di risciacquo. | Sanitizer for surfaces, 5 L

Plastica | Plastic

19,6 x 25,6 x 14,5 cm



MADE IN ITALY



44089  
**Baltimore**

Sapone Igienizzante Naturale in tanica da 5 L. | Sanitizing soap, 5 L

Plastica | Plastic

19,6 x 25,6 x 14,5 cm





.02



44056  
**Carlton**

Gel igienizzante con dosatore, 500 ml | Sanitizing gel with dispenser, 500 ml

Plastica | Plastic

8,5 x 14 cm



500 ML



30 ML



.23



.08



.02



44298  
**Cesio**

Gel idroalcolico da 30ml con custodia in silicone con laccetto per appendere. | 31 ml hydroalcoholic gel

Soluzione idroalcolica 75% alcol, PP, PS | Hydroalcoholic solution 75% alcohol, PP, PS

8 x 3,4 x 2,2 cm



30 ML



.02



44094  
**Chuck**

Gel per igiene e pulizia della pelle in un flacone da 30 ml. Con moschettone. Soluzione con contenuto alcolico al 65%. | 30ml hand sanitizing solution. Translucent bottle, equipped with a carabiner. 65% ALCOHOL

Plastica | Plastic

3,5 x 10 x 2,2 cm



100 ML

MADE IN ITALY



.02



44076  
**Eliseo**

Gel Igienizzante Naturale da 100 ml con antibatterico naturale. | Sanitizing gel, 100 ml

Plastica | Plastic

5 x 12 x 3 cm



50 ML



.02



44299  
**Cinnamomo**

Gel igienizzante per mani 50 ml, in flacone trasparente con tappo bianco. | Hand sanitizing gel 50 ml, in transparent bottle with white cap

Plastica | Plastic

4,5 x 2,9 x 8,5 cm



MADE IN EU



.02

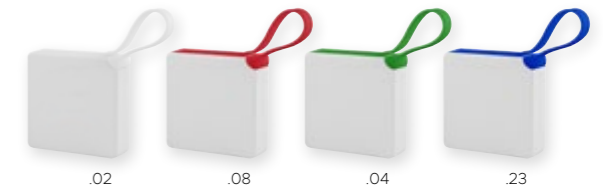


44115  
**Noete**

Salvietta igienizzante 100% compostabile. Confezione da 1 pezzo. | 100% compostable sanitizing wipes.

100% Compostabile | 100% Compostable

6,7 x 8 cm



.02

.08

.04

.23



44177  
**Saffo**

Set di 10 salviette imbevute di Alcol in una scatola di plastica | Set of 10 alcohol wipes in plastic box

Plastica, No Woven | Plastic, No Woven

6 x 6 x 1,7 cm



.08

.02



48052  
**Dubnio**

Kit primo soccorso contiene forbici, strisce, nastro adesivo, alcool, antisettico, garza e bendaggio. | First aid kit contains scissors, strips, tape, alcohol wipe, antiseptic wipe, gauze and bandage.

Poliestere | Polyester

14 x 10 x 4 cm



.08



48057  
**Ricky**

Kit primo soccorso contiene benda in tessuto, 8 tappi per le orecchie, 5 cerotti adesivi, forbici, 4 salviette di alcol, 1 garza sterile e un rotolo di nastro adesivo. | First Aid Kit containing fabric bandage, 8 earplugs, 5 adhesive band-aids, scissors, 4 alcohol wipes, 1 sterile gauze and a roll of tape.

Poliestere | Polyester

13 x 9 cm



.32

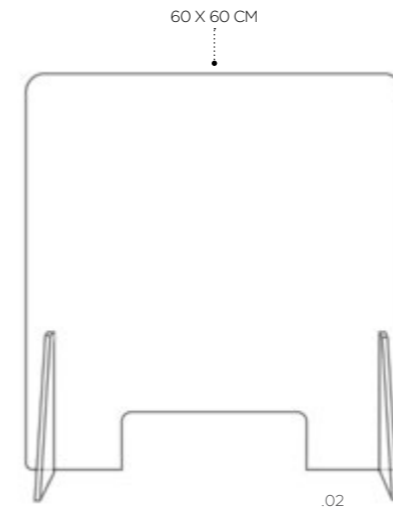


48055  
**Romeo**

Kit primo soccorso contiene 1 forbice, 1 nastro, 1 salvietta umida, 3 spille da balia, 2 cerotti e 1 banda garzata. | First aid kit in tin box. Includes: 1 scissors, 1 tape, 1 wet wipe, 3 safety pins, 2 plasters and 1 gauze bandage.

Latta | Tin

9,6 x 6 x 2 cm



44087  
**Jhonn**

Pannello Parafiato da banco | Breath protection panel

Plexiglass | Plexiglass

60 x 60 cm - Apertura: 25 x 10 cm



.08



48053  
**Dukkah**

Kit primo soccorso contiene benda in tessuto, 8 tappi per le orecchie, 5 cerotti adesivi, forbici, 4 salviette di alcol, 1 garza sterile e un rotolo di nastro adesivo. | First Aid Kit containing fabric bandage, 8 earplugs, 5 adhesive band-aids, scissors, 4 alcohol wipes, 1 sterile gauze and a roll of tape.

Poliestere | Polyester

13 x 9 cm



.05

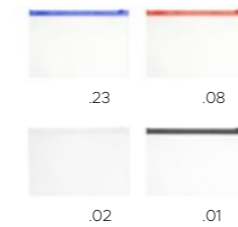


48006  
**Idar**

Porta cerotti, contiene 5 pz | Plaster holder, including 5 pcs

Plastica | Plastic

4,1 x 10,2 x 1 cm



44224  
**Arlie**

Custodia mascherina con chiusura a zip, finitura traslucida. Morbida e pieghevole. | Mask case with zip closure, translucent finish. Soft and foldable.

Pvc | pvc

21,5 x 12 cm



43021  
**Flo**

Set di 10 tovagliette in cellulosa che si espandono a contatto con l'acqua. Forniti in tubetto trasparente con tappo. | Set of 10 cellulose wipes that expand upon contact with water. Presented in an individual transparent tube with zipper.

Cellulosa | Cellulose

23 cm



# PILL BOXES

With compartments and lid.



2 INSIDE BOXES

.02



48033  
**Mariche**

Portapillole, con 2 scomparti, chiusura di sicurezza e lama taglia pillole. | Pill box in soft and resistant material in white. With 2 inside boxes, safety lock and blade to split pills.

Plastica | Plastic  
9,5 x 1,6 x 4,8 cm



.02

Antibacterial



48046  
**Trish**

Portapillole antibatterico, finitura solida, con 3 scomparti e chiusura di sicurezza. | Antibacterial pill box in solid finishing. With 3 compartments and safety lock.

Plastica | Plastic  
6 x 1,3 x 3,9 cm



.21

.05

.04

.08



48015  
**Leonz**

Portapillole semitrasparente con 3 scomparti con chiusura di sicurezza | Translucent body pill box in vivid colours. with 3 compartments and safety lock.

Plastica | Plastic  
6 x 4 x 1,3 cm



.00



48051  
**Dragoncello**

Portapillole con 7 scomparti, uno per ogni giorno della settimana, coperchio scorrevole | Bamboo pill box with 7 compartments according to the days of the week and sliding lid.

Bamboo | bamboo  
15 x 2,5 x 4 cm



.00



48050  
**Disprosio**

Portapillole con 3 scomparti, chiusura magnetica | Bamboo pill box with 3 compartments.

Bamboo | bamboo  
8 x 2,5 x 4 cm



.32



48021  
**Ludmi**

Portapillole rotondo con 3 scomparti interni. | Round metallic pillbox with three interior compartments.

Metallo | Metal  
Ø 4,8 cm



**B&P srl**

Via Monti Berici 6, 37057 - San Giovanni Lupatoto (VR) – Italy  
Tel. 045 8779052 - mob: +39 3294825119

[www.bppromotions.it](http://www.bppromotions.it) - [info@bppromotions.it](mailto:info@bppromotions.it)